



Week 1 & Week 2 Forecast for the Philippines using GEFS Model

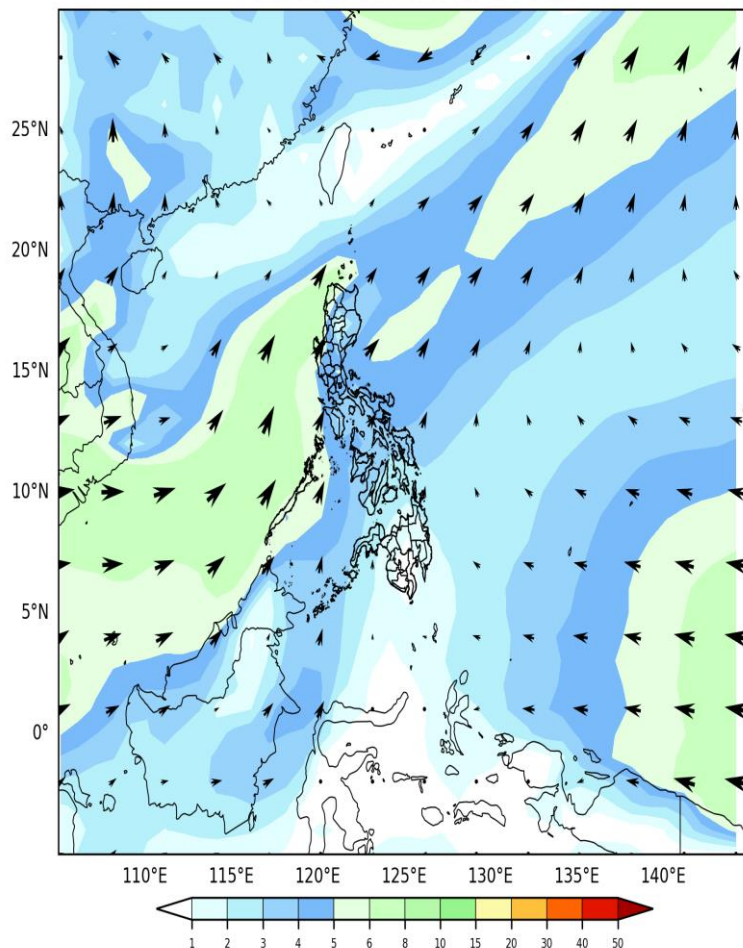


GEFS Week-1 Wind Forecasts:

Week 1: May 26- Jun 01, 2025

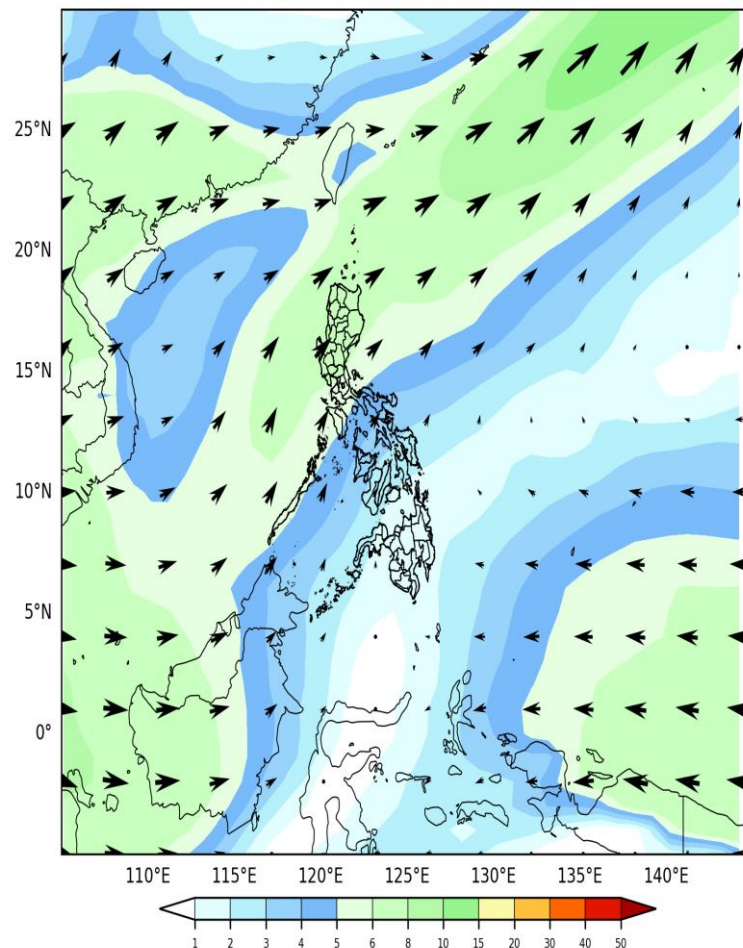
GEFS Week-1 850-hPa Wind Total

Valid: 2025-05-26 to 2025-06-01



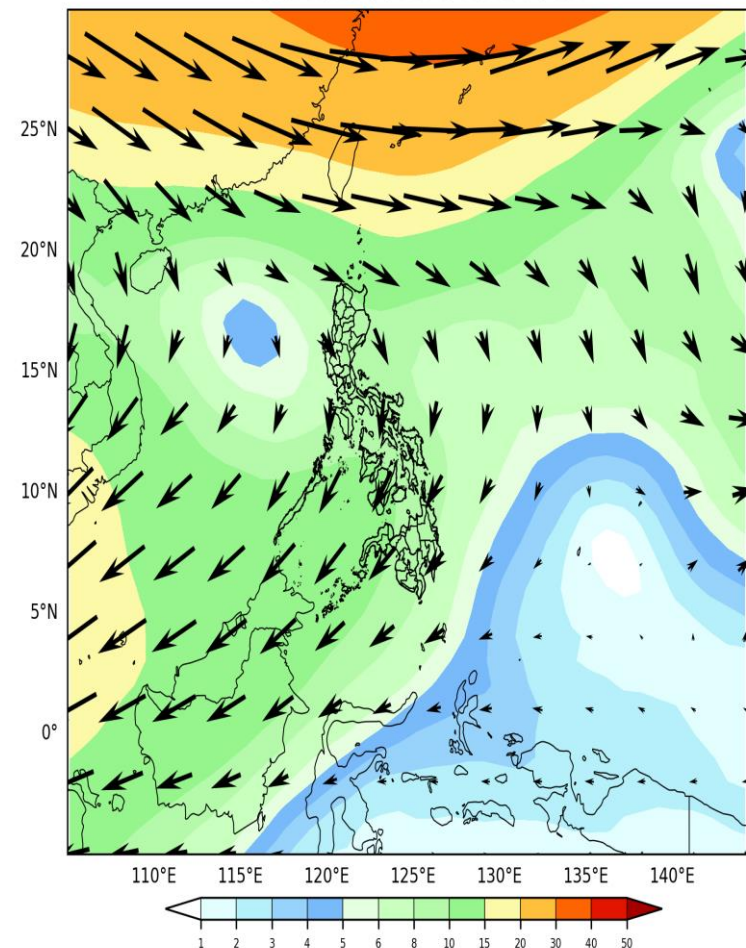
GEFS Week-1 700-hPa Wind Total

Valid: 2025-05-26 to 2025-06-01



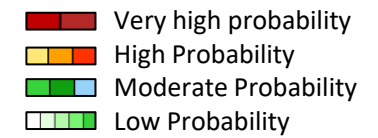
GEFS Week-1 200-hPa Wind Total

Valid: 2025-05-26 to 2025-06-01



Southwest windflow affecting Palawan. Easterlies affecting the rest of the country during the forecast period.

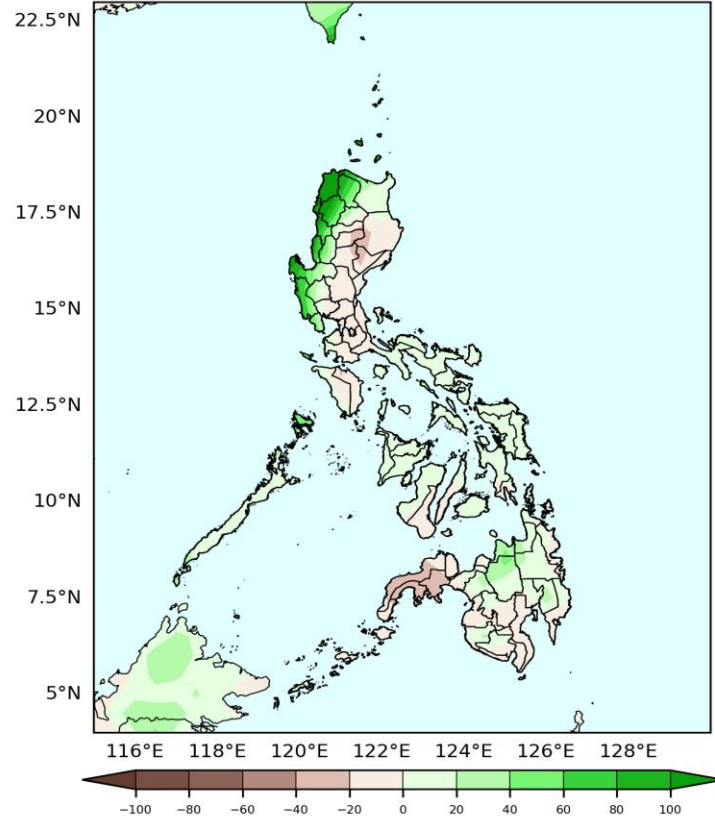
Precipitation Anomaly and Exceedance Probability > 25/50 mm



Week 1: May 26- Jun 01, 2025

GEFS Week-1 Precip Anomaly

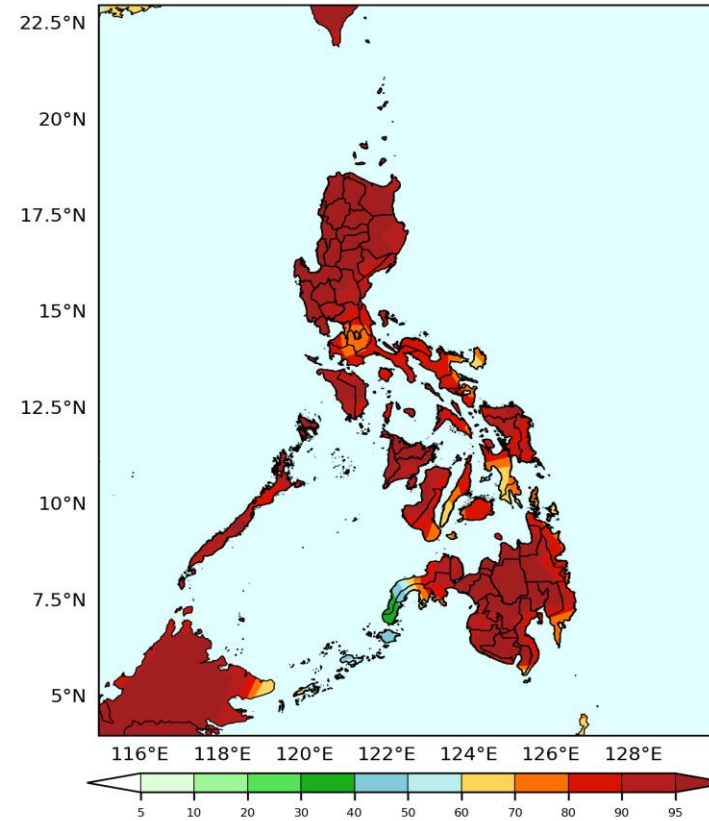
Valid: 2025-05-26 to 2025-06-01



Increase of rainfall of 40-90mm is expected in western parts of northern and central Luzon; 10-40mm in Bicol Region, Palawan, and most parts of Visayas and Mindanao while 10-50mm rainfall deficit is expected for the rest of Luzon and Zamboanga Peninsula.

GEFS Week-1 Exceedance Prob. > 25mm

Valid: 2025-05-26 to 2025-06-01

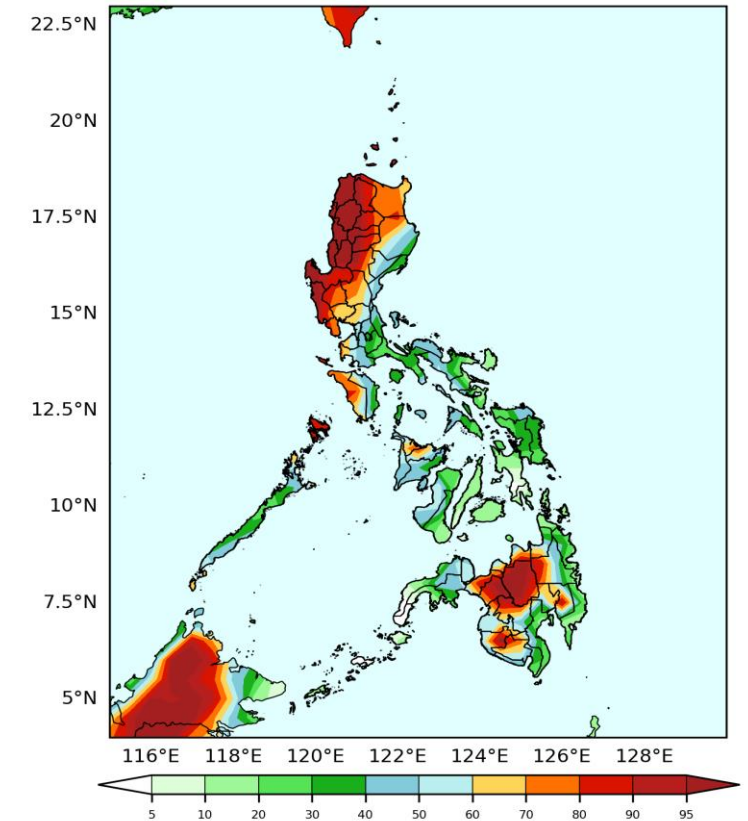


Probability to Exceed 25mm

- High to very high over most parts of the country

GEFS Week-1 Exceedance Prob. > 50mm

Valid: 2025-05-26 to 2025-06-01

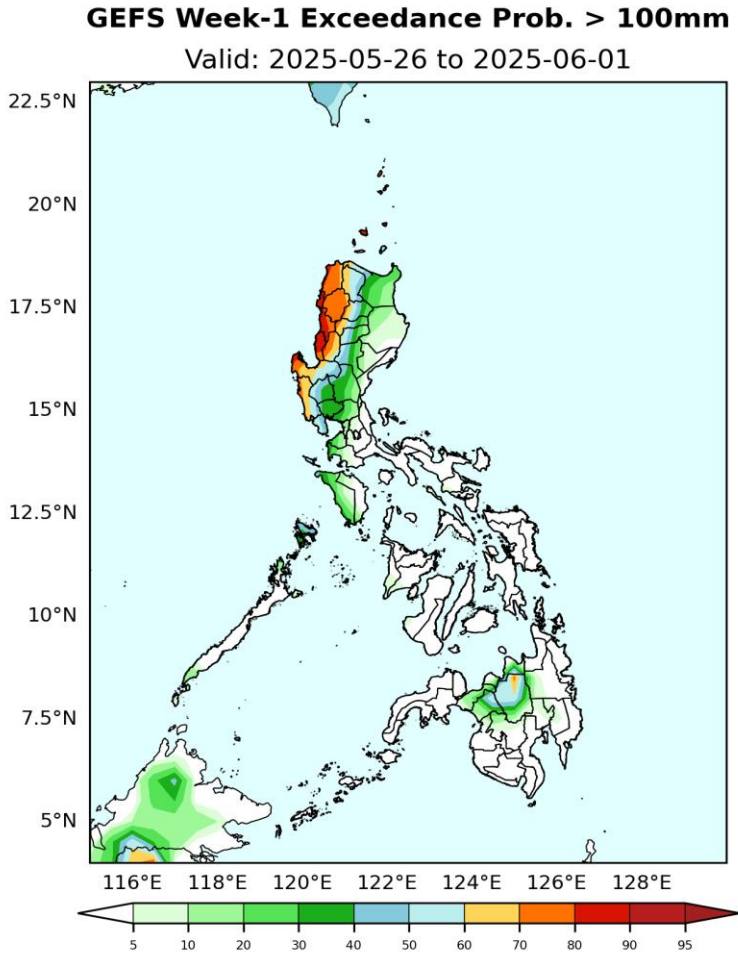
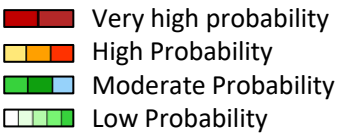


Probability to Exceed 50mm

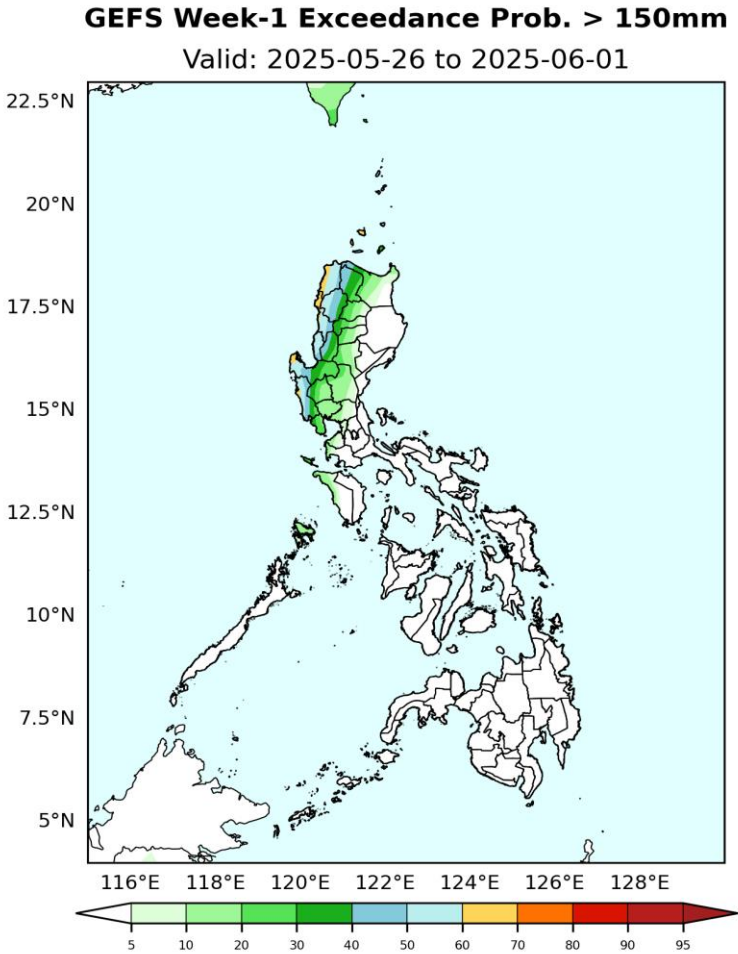
- High to very high over most of Ilocos Region, CAR, Zambales, Bataan, Bukidnon and Lanao provinces;
- Moderate to high over the rest of Northern Luzon and Central Luzon, NCR, Cavite, Batangas, MIMAROPA, Panay Island, the rest of Central Mindanao and SOCCSKSARGEN;
- Low to moderate over the rest of the country.

Exceedance Probability > 100/150/200 mm

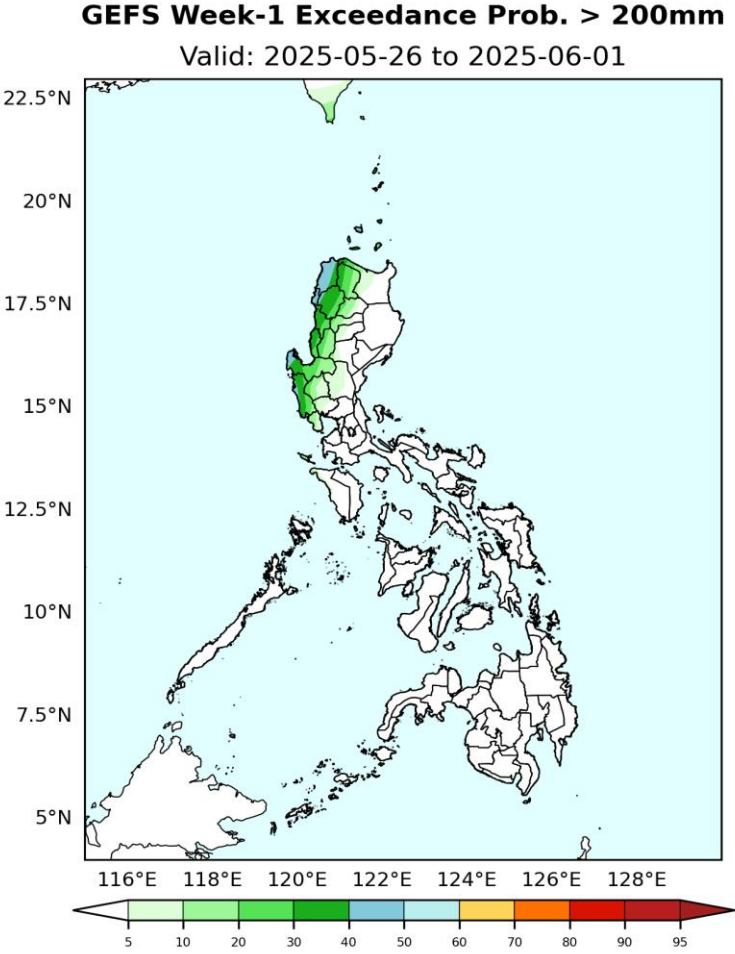
Week 1: May 26- Jun 01, 2025



- Probability to Exceed 100mm**
- Moderate to high over the western sections of Northern and Central Luzon and Bukidnon;;
 - Low to moderate over the rest of Northern and Central Luzon;
 - Low over the rest of the country.



- Probability to Exceed 150mm**
- Moderate to high over Batanes, most of Ilocos Region and Zambales;
 - Low to moderate over the western section of CAR and the rest of Central Luzon;
 - Low over the rest of the country.



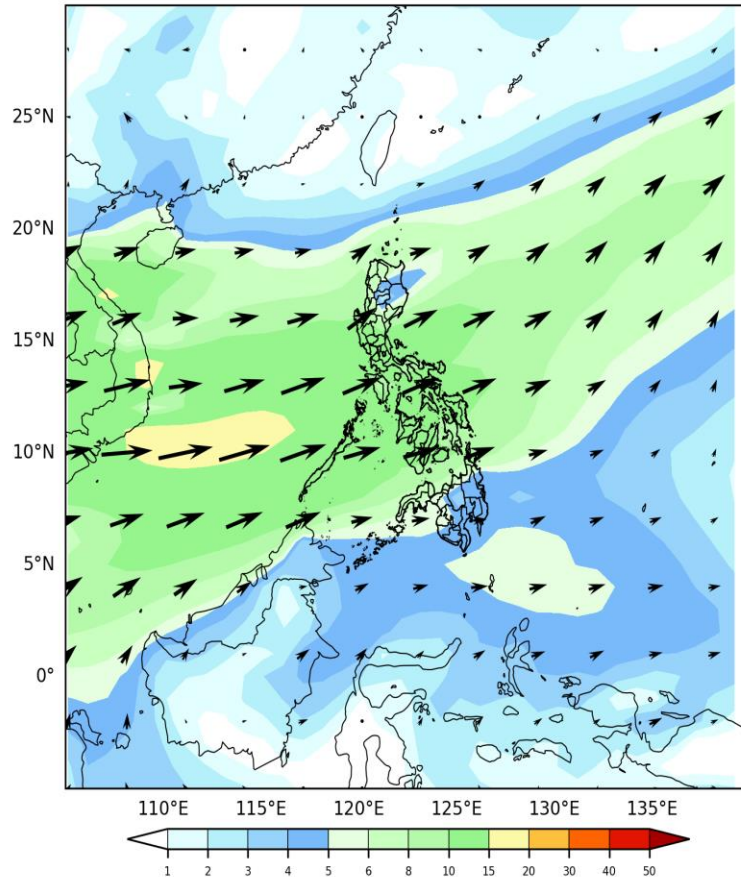
- Probability to Exceed 200mm**
- Low across the country.

GEFS Week-2 Wind Forecasts:

Week 2: Jun 02-08, 2025

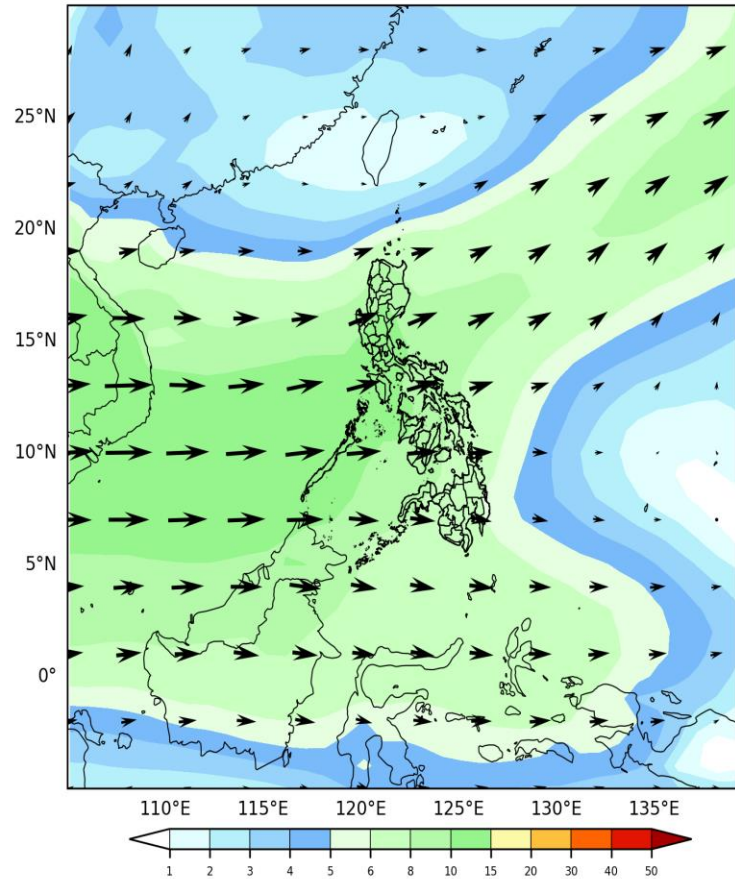
GEFS Week-2 850-hPa Wind Total

Valid: 2025-06-02 to 2025-06-08



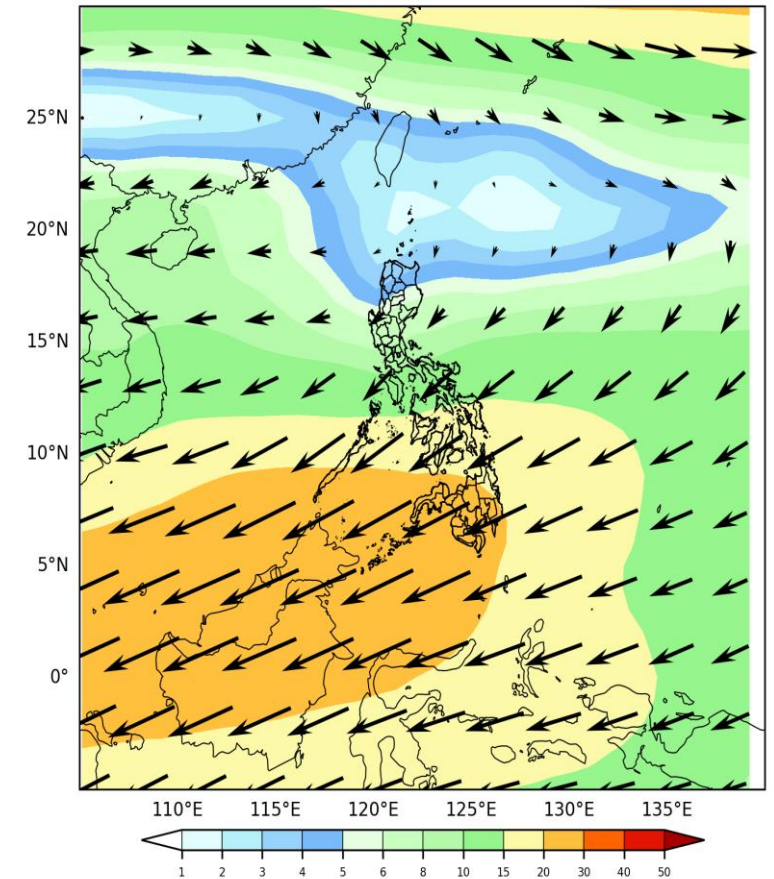
GEFS Week-2 700-hPa Wind Total

Valid: 2025-06-02 to 2025-06-08



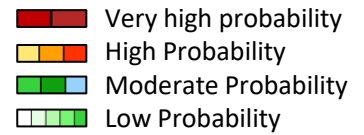
GEFS Week-2 200-hPa Wind Total

Valid: 2025-06-02 to 2025-06-08



Southwest windflow affecting Luzon and Visayas. Easterlies affecting Mindanao during the forecast period.

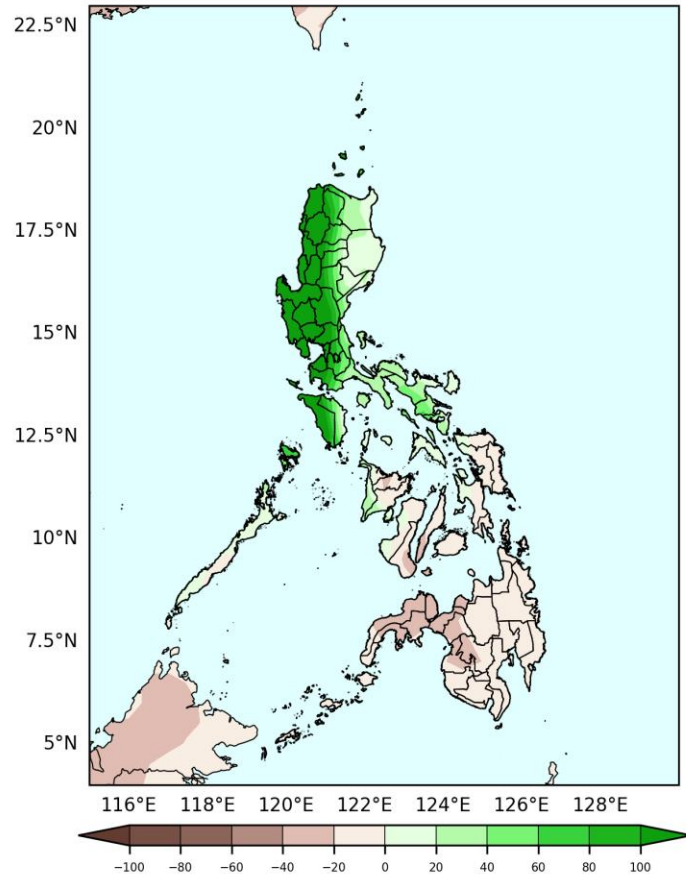
Precipitation Anomaly and Exceedance Probability > 25/50 mm



Week 2: Jun 02-08, 2025

GEFS Week-2 Precip Anomaly

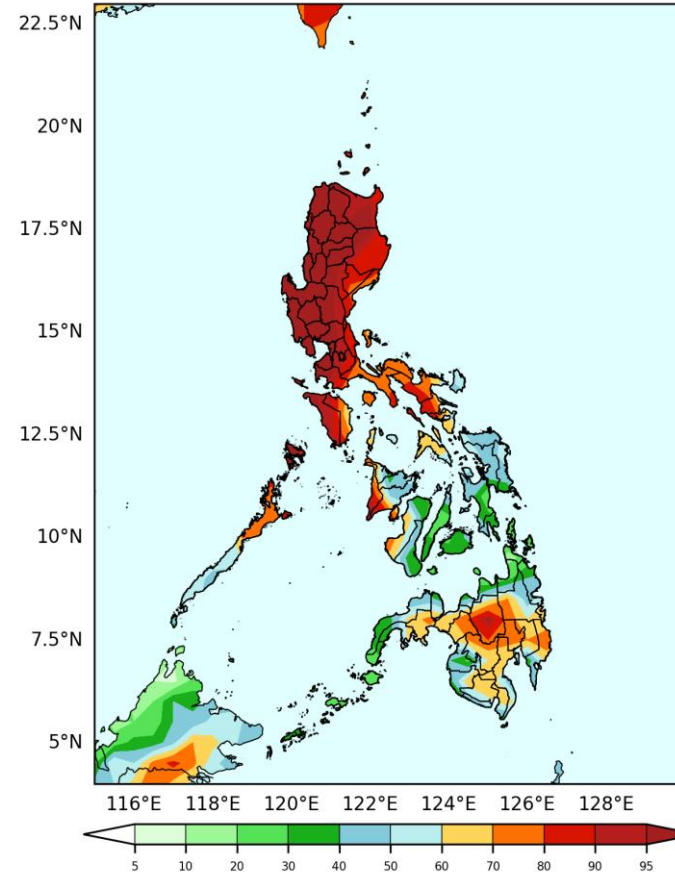
Valid: 2025-06-02 to 2025-06-08



Increase of rainfall of 20-100mm is expected in most parts of Luzon while 10-40mm rainfall deficit is expected in Visayas and Mindanao.

GEFS Week-2 Exceedance Prob. > 25mm

Valid: 2025-06-02 to 2025-06-08

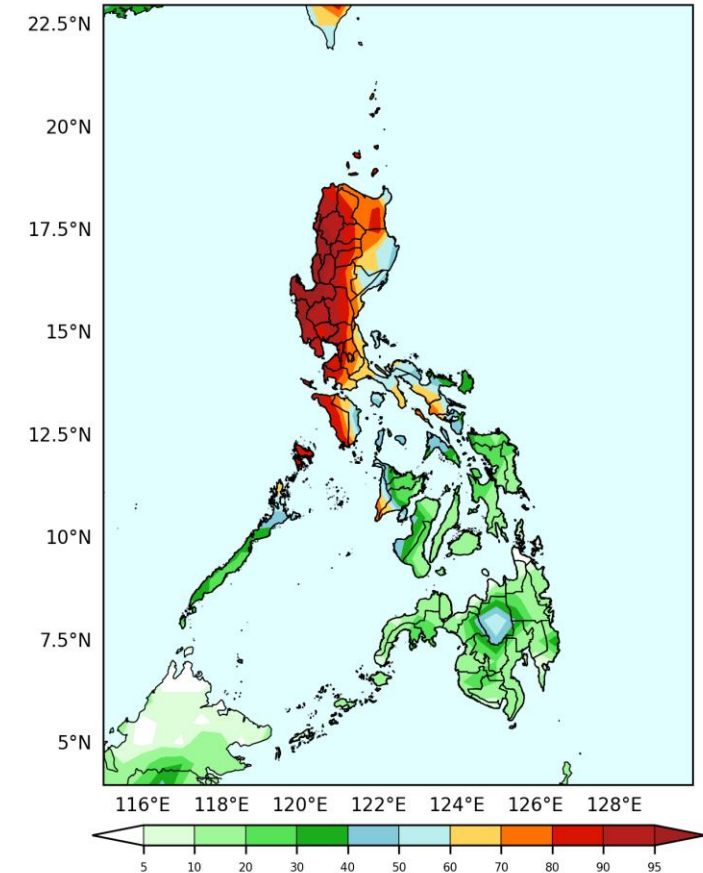


Probability to Exceed 25mm

- High to very high over most parts of Luzon and Bukidnon;
- Moderate to high over the rest of the country.

GEFS Week-2 Exceedance Prob. > 50mm

Valid: 2025-06-02 to 2025-06-08

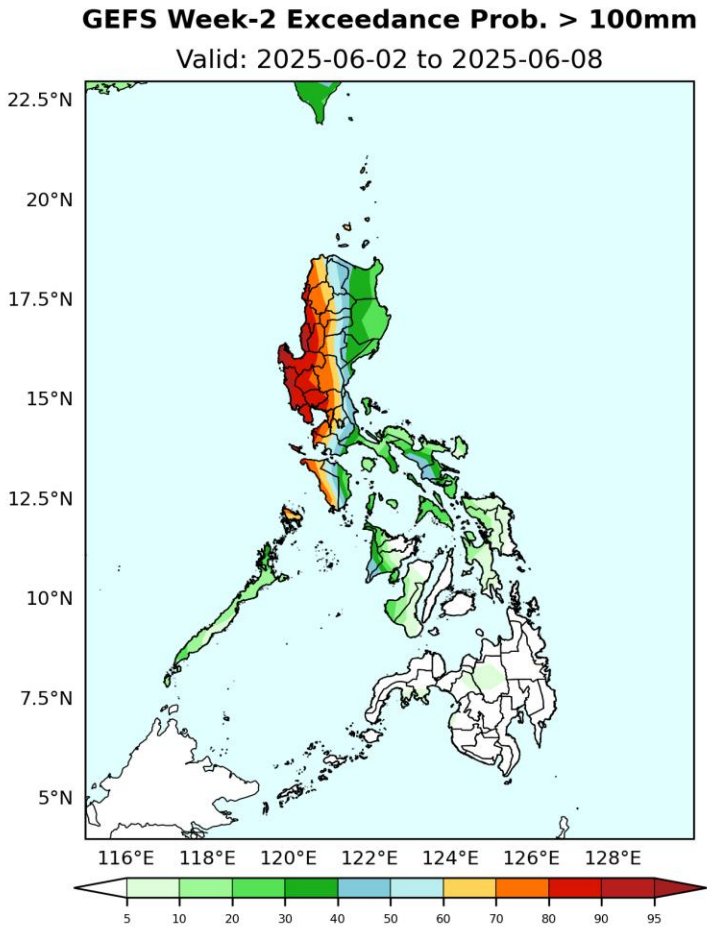
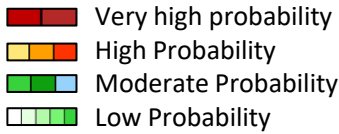


Probability to Exceed 50mm

- High to very high over most of Northern and Central Luzon, Occ. Mindoro, NCR and Cavite;
- Moderate to high over the rest of Luzon, Antique and western part of Iloilo;
- Low to moderate over the rest of the country.
-

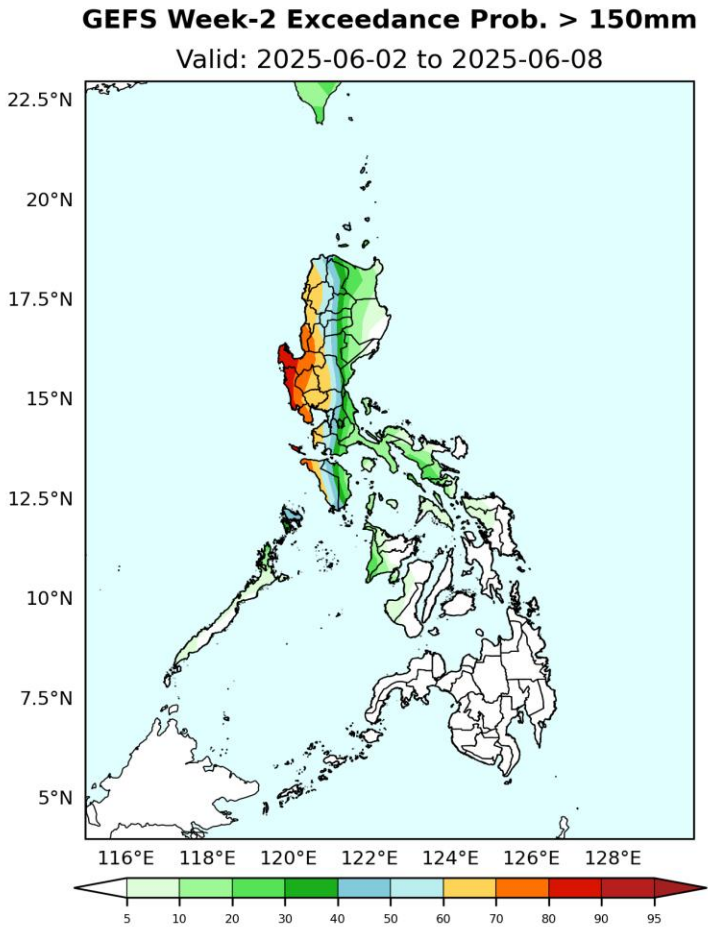
Exceedance Probability > 100/150/200 mm

Week 2: Jun 02-08, 2025



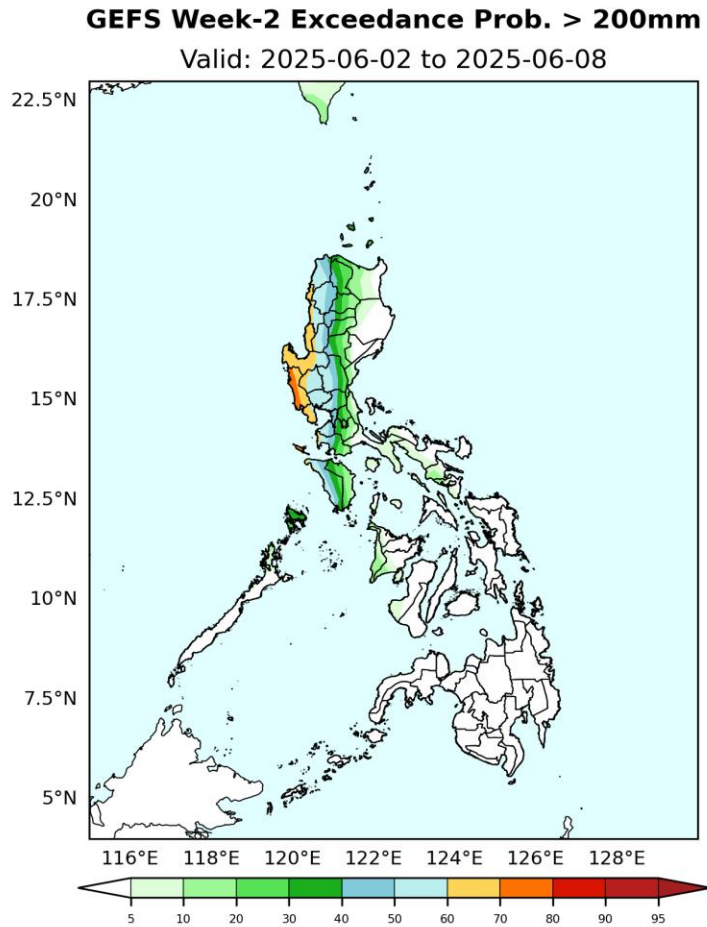
Probability to Exceed 100mm

- High to very high over the western sections of Northern and Central Luzon;
- Moderate to high the rest of CAR and Central Luzon, CALABARZON except Quezon, Occidental Mindoro and Coron Island;
- Low to moderate over the rest of Luzon and Visayas;
- Low over Mindanao



Probability to Exceed 150mm

- Moderate to high over the western Luzon except Palawan;
- Low to moderate over the rest of Luzon;
- Low over the rest of the country.



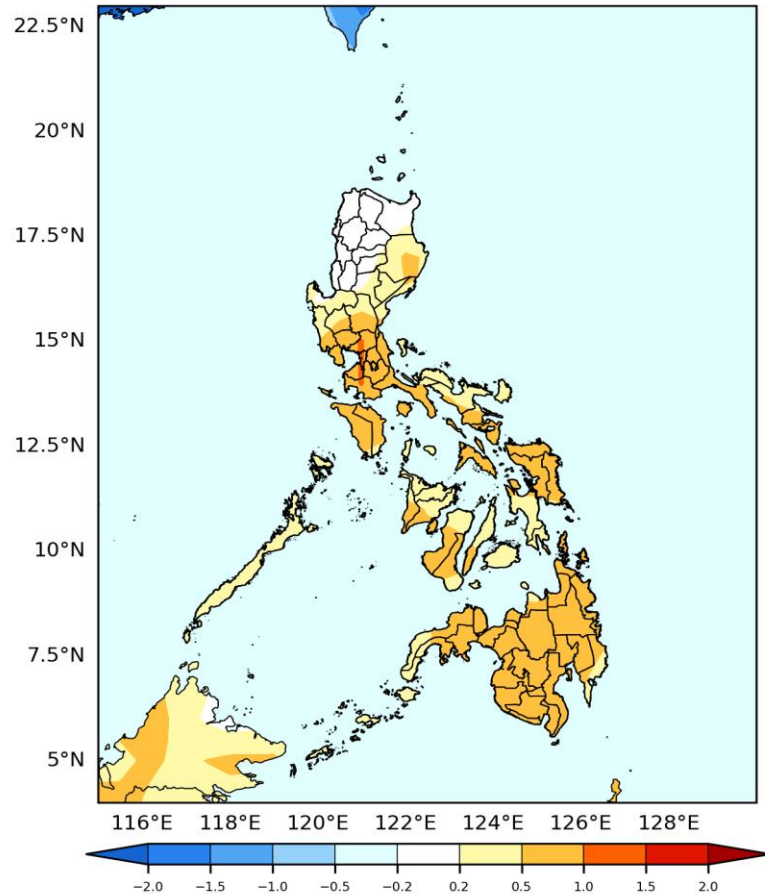
Probability to Exceed 200mm

- Moderate to high over the western Luzon except Palawan;
- Low over the rest of the country.

GEFS Week-1 & 2 Forecasts: T2m Anomaly

GEFS Week-1 T2m Anomaly

Valid: 2025-05-26 to 2025-06-01

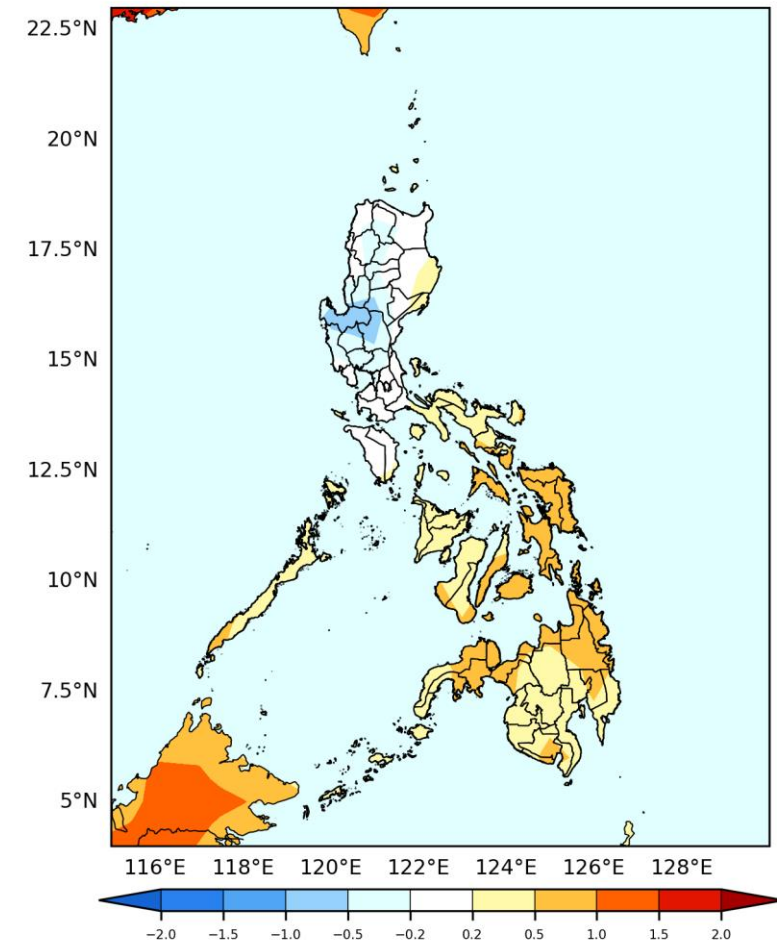


2m Temperature Week 1: May 26- Jun 01, 2025

Near to slightly warmer than average surface air temperature will likely be experienced in most of Northern Luzon; slightly warmer to warmer temperature is forecasted for the rest of the country.

GEFS Week-2 T2m Anomaly

Valid: 2025-06-02 to 2025-06-08



2m Temperature Week 2: Jun 02-08, 2025

Near to slightly cooler than average surface air temperature will likely be experienced in most parts of Luzon; slightly warmer to warmer temperature is forecasted for the rest of the country.